

CAPABILITIES

ANODIZE

MATERIAL FINISHING SPECS

Aluminum

Sulfuric Acid Anodize

Mil-A-8625F, Type II, Class 1, Clear

Mil-A-8625F, Type II, Class 2, Dyed

- Black, Red, Blue, Green, Gold, Gray, Tan
- Custom Colors Available upon Request

Hardcoat Anodize

Mil-A-8625F, Type III, Class 1, Natural

Mil-A-8625F, Type III, Class 2, Dyed

- Black, Red, Blue, Green, Gold, Gray, Tan
- Custom Colors Available upon Request

PASSIVATE

MATERIAL FINISHING SPECS

Stainless Steel

AMS2700 Method 2

(Supersedes AMS QQ-P-35)

ASTM A380

ASTM A967

CHROMATE (CHEM FILM, CHEMICAL CONVERSION COATING, ALODINE, IRIDITE)

MATERIAL FINISHING SPECS

Aluminum

Hexavalent Chrome Free Clear

Mil-DTL-5541, Type II, Class 1A

(Maximum Corrosion Resistance)

Mil-DTL-5541, Type II, Class 3

(Protection Against Corrosion and Lower Electrical Resistance)

MIL-C-5541 Class 1A & Class 3

Hexavalent Chrome Yellow

Mil-DTL-5541, Type I, Class 1A

(Maximum Corrosion Resistance)

Mil-DTL-5541, Type I, Class 3

(Protection Against Corrosion and Lower Electrical Resistance)

MIL-C-5541 Class 1A & Class 3

ELECTROLESS NICKEL

MATERIAL FINISHING SPECS

Aluminum

Mil-C-26074

AMS-C-26074

Steel

AMS 2404E

ASTM B733

Mil-A-26074, Class 1

COLOR MATCHING • COMPLEX MASKING

The Forge team knows that appearance is just as critical as performance when producing engineered coatings and has honed their color matching capabilities. Many product applications require the integration of several components produced using varying metal substrates. A common challenge for finishers is the ability to accurately match the varying material color results. Forge works closely with industry experts and chemical suppliers to select the best formula and process to meet this critical challenge.

forgemetalfinishing.com

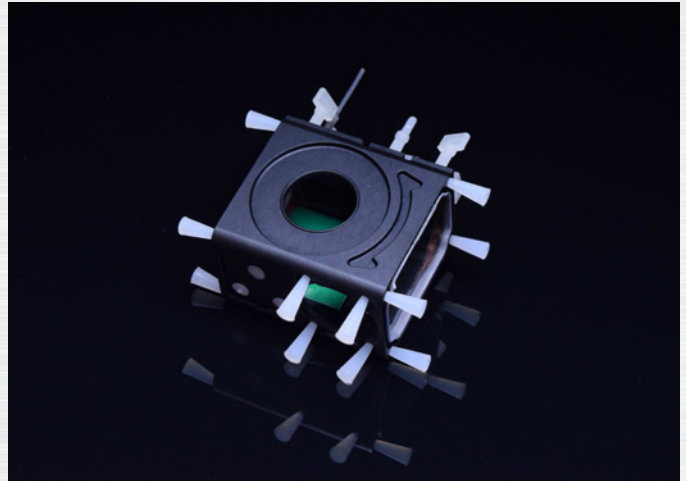
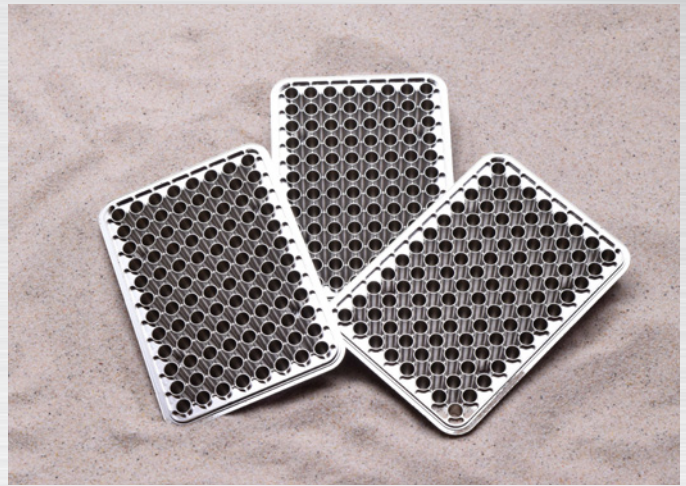


- **Predictable delivery schedules**
- **Maintain Dimensional Integrity**
- **Consistent Quality**

At Forge Metal Finishing, we understand that these are quite possibly the most important factors when selecting a plating partner. From the minute we receive an order our structured and detailed process for each part begins. Each team member following the custom handling and plating process we have created, assures continuity and repeatability. This template for success and our people make the difference.

Quality Policy

It is the goal of every Forge Metal Finishing employee to meet customer requirements. "First Time Every Time" we achieve this goal through focusing on our core principles of Integrity, Commitment, Perseverance, Knowledge, and Respect.



FORGE

METAL FINISHING

383 Buell Road
Rochester, NY 14624
(585) 730-7340

forgemetalfinishing.com

